



Easy  
Read



# Participant information form

Apply to help us with our research project



Shaping  
Our Lives

Inclusive Involvement Matters

MANCHESTER  
1824

The University of Manchester

# Easy Read



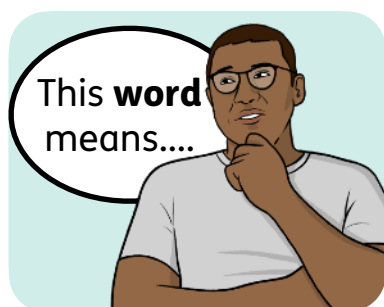
This is an Easy Read version of some information. It may not include all of the information but it will tell you about the important parts.



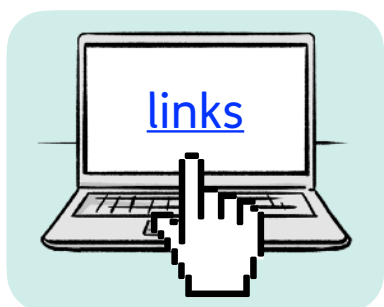
This Easy Read booklet uses easier words and pictures. Some people may still want help to read it.



Some words are in **bold** - this means the writing is thicker and darker. These are important words in the booklet.



Sometimes if a bold word is hard to understand, we will explain what it means.



[Blue and underlined](#) words show links to websites and email addresses. You can click on these links on a computer.

# What is in this booklet

About this booklet.....	4
The form .....	5
Sending your form .....	14



You can fill in a quick survey to say what you think about this Easy Read booklet:

[info.easy-read-online.co.uk/easy-read-feedback-survey](http://info.easy-read-online.co.uk/easy-read-feedback-survey)

# About this booklet



This booklet is from Shaping Our Lives.



It is a form that you can fill in to apply to join our research project.



Please read our information booklet called '**Helping us with our research project**' before filling in this form.



You can find the information booklet here: [www.shapingourlives.org.uk/involvement\\_opp/advisory-group-members-recruitment-for-manchester-university-project/](http://www.shapingourlives.org.uk/involvement_opp/advisory-group-members-recruitment-for-manchester-university-project/)

# The form

Please tell us:

Your name:



Your email:

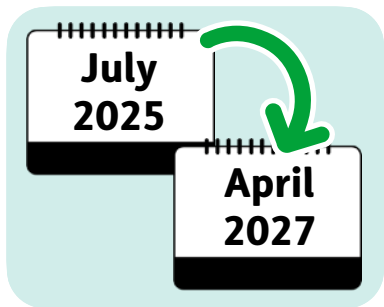


Your phone number:



Your address:





**Question 1:** Are you able to take part in the whole research project, which will start in July 2025 and finish in April 2027?

Yes

No

☐☐

**Question 2:** Are you 18 years old or older?

Yes

No

☐☐

**Question 3:** Where in England do you live?



**Question 4:** Are you able to take part in the first 2 Advisory Group meetings, which will happen at the end of August 2025 and in October 2025?

Yes

No

☐☐

**Question 5:** Do you use adult **social care** services, or have you used them at some point in your life?

**Social care** is the extra support some people need to live their lives, like support with eating or washing.

Yes

No

☐☐



If you answered 'yes' to question 5, please tell us a little bit about the type of adult social care services you have used:



**Question 6:** Have you ever taken part in other research projects about social care?

Yes

No

☐☐





If you answered 'yes' to question 6, please tell us a little bit about the research project you took part in:



**Question 7:** Please tell us why you want to join our Advisory Group.

*Please do not write more than 100 words.*



**Question 8:** Please tell us what type of support you need with each of these things:

*If you do not need support with something, you can leave the box blank.*



a. Taking part in meetings that are in person:



b. Taking part in meetings that are online:



c. Understanding spoken or written information:



d. Anything else you need support with:



**Question 9:** If needed, are you able to take part in a short chat over the phone in either June 2025 or July 2025?

Yes

No



**Question 10:** How would you like us to contact you or give you information?

☐

By email

☐

By phone

☐

By post

☐

By written documents

# Sending your form



Thank you for filling in this form.



You can now send your form back to us by emailing it to:

[ana@shapingourlives.org.uk](mailto:ana@shapingourlives.org.uk)



You can also email to ask for more information or to fill in the form over the phone.



You can also contact us by phone:

07904 532 939

This Easy Read booklet was produced by [easy-read-online.co.uk](http://easy-read-online.co.uk)  
The booklet includes images licensed from Photosymbols & Shutterstock.