



Easy
Read



Helping us with our research project

Information booklet



Shaping
Our Lives

Inclusive Involvement Matters

MANCHESTER
1824

The University of Manchester

Easy Read



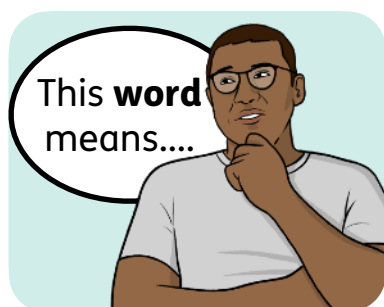
This is an Easy Read version of some information. It may not include all of the information but it will tell you about the important parts.



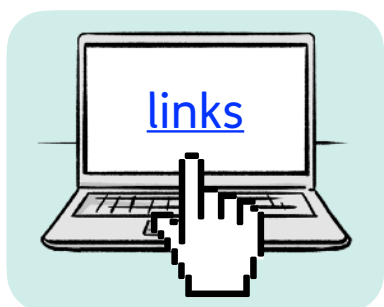
This Easy Read booklet uses easier words and pictures. Some people may still want help to read it.



Some words are in **bold** - this means the writing is thicker and darker. These are important words in the booklet.



Sometimes if a bold word is hard to understand, we will explain what it means.



[Blue and underlined](#) words show links to websites and email addresses. You can click on these links on a computer.

What is in this booklet

About this booklet.....	4
About the project	5
How you can help us	6
How to apply	11
Contact us	13



You can fill in a quick survey to say what you think about this Easy Read booklet:

info.easy-read-online.co.uk/easy-read-feedback-survey

About this booklet



This booklet is from Shaping Our Lives.

We are working on a **research project** with the University of Manchester and Manchester City Council.



A **research project** is when a group of people collect information about something to find out more about it.



We are looking for 5 people who have used adult **social care** services to help us with our project.



Social care is the extra support some people need to live their lives, like support with eating or washing.



If you are interested in helping us, please read this booklet to find out more.

About the project



Our project is about adult social care services in Manchester.



We want to find out whether some people are not able to use adult social care services, and why.



We will be looking at information in people's social care records.



This will help us to understand how well adult social care services are working.

How you can help us



We are looking for 5 people who have used adult social care services to join our project's **Advisory Group**.



Our **Advisory Group** will help us with our project by giving us advice about what we should be finding out.



If you would like to join our Advisory Group, you will need to apply.

Who can apply?

If you would like to join our Advisory Group, you have to:



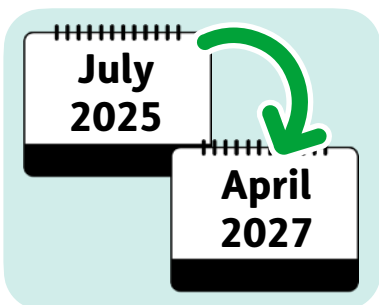
- Be 18 years old or older.



- Live in England.
But you do not need to live in Manchester. People from all over England can apply.



- Use adult social care services, or have used them at some point in your life.



- Be able to take part in the whole research project, which will start in July 2025 and finish in April 2027.

What will you do?

You will:



- Share your thoughts about the adult social care services that you have used.



- Share what you think of the way information about social care services is used in research projects.



- Take part in Advisory Group meetings.



There will be around 6 to 12 Advisory Group meetings between July 2025 and April 2027.



Most of the meetings will be done online using video calls.



There may be some in person meetings in Manchester.



But you can still take part in these meetings online if you cannot take part in person.

Will you get paid?



We will offer you **involvement payments**.

An **involvement payment** is money that you are paid for your time.

We will offer you:



- £25 for an hour.



- £75 for half a day.



We will offer you £150 for a full day.



We may also help you with any money that you pay to be able to take part in the research project.

This includes things like:



- Paying for travel to meetings.



- Paying for someone to support you when you take part in online meetings.

How to apply



If you would like to join our Advisory Group, you will need to apply.



You can apply by filling out our **'Participant information form'**.



You can find the form here:

[www.shapingourlives.org.uk/
involvement_opp/advisory-group-
members-recruitment-for-manchester-
university-project/](http://www.shapingourlives.org.uk/involvement_opp/advisory-group-members-recruitment-for-manchester-university-project/)



The form is in Easy Read.



You have until Friday 4 July to send us your form.



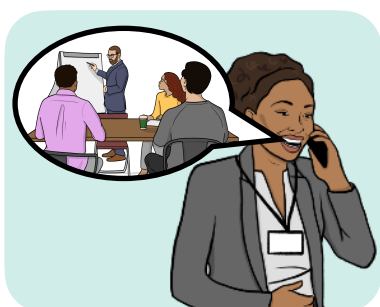
But if lots of people apply, we may stop looking at forms earlier than Friday 4 July.



So we suggest you fill in the form and send it back to us as soon as possible.



If you would like to fill in the form by telling us your answers over the phone, please contact us.



After you have sent your form, we may call you for a short chat about the project.

Contact us

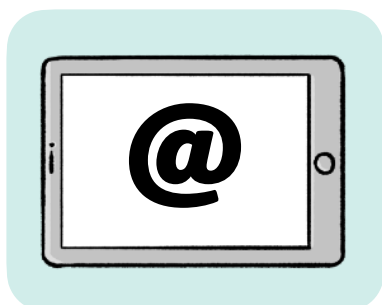


You can contact us for more information or to fill in the form over the phone.

You can contact us by:



- Phone: 07904 532 939



- Email: ana@shapingourlives.org.uk