

Social care research group



Contents

Page

Introduction	3
--------------	---

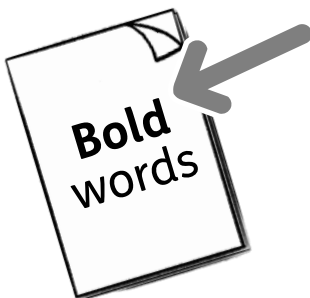
What we want to find out	4
--------------------------	---

Information about the research groups	5
---------------------------------------	---

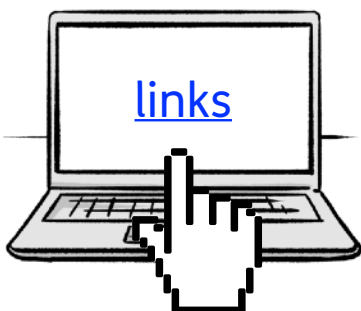
Who we are looking for and what you will do	7
---	---

About the project	10
-------------------	----

For more information	19
----------------------	----



In this Easy Read document, difficult words are in **bold**. We explain what these words mean in the sentence after they have been used.



Some words are blue and underlined. These are links which will go to another website which has more information.

Introduction



This information is from Shaping Our Lives for the University of Hertfordshire.



It is about a project we are doing about **social care**.

Social care is care and support for people to live independently.



Our project is about how people, care staff and university staff can find new information to make services better.



To help us, we are putting together a **research** group of people who have experience of social care.



Research is about looking into something to find out more information.

What we want to find out

We have decided we want to find out about:

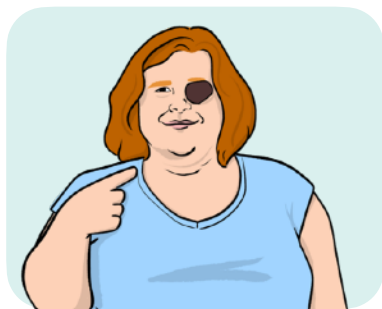


- The experiences of older people who leave hospital and go to their own homes.

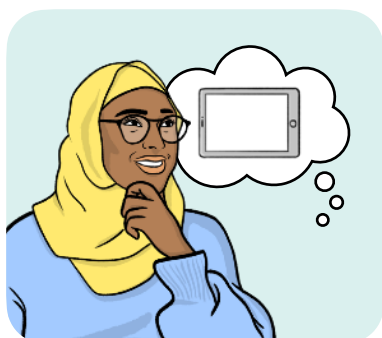


- How well **Occupational Therapy** services help people to do things on their own.

Occupational Therapy uses activities and equipment to help people get better after illness.



- How Occupational Therapy affects people with learning difficulties.



- What people think about using technology to help them to look after themselves on their own at home.

Information about the research groups



The project will run from June 2022 to May 2024.



There will be about 6 people needed for the research group.



The group will have meetings 4 times per year.



The first meeting will be in early July 2022 and will be a face to face meeting.



Meetings in the future might be face to face or online.



There might be other activities that you can take part in if you want to.



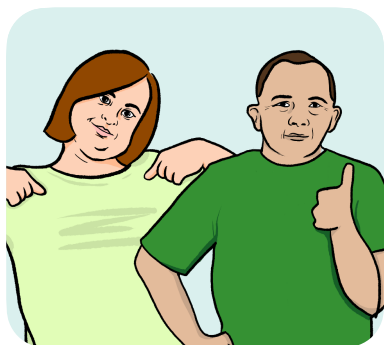
You will get £75 for a half day meeting or £150 for a full day meeting.

We will help if you have to spend money to help you take part in the project.



We will give you back the money you spend on transport to get to the meetings.

Who we are looking for and what you will do



We are looking for 2 people with learning disabilities.



We are looking for about 4 other people who:

- Have used social care services, or



- Have helped their family or friends who have used social care services.

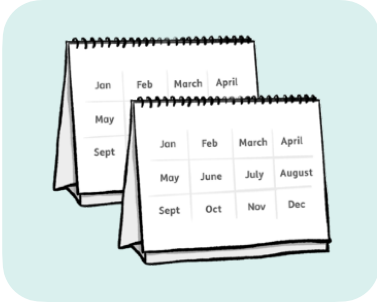


You will need to be interested in research and finding information.

You will need to have some experience of finding out information about social care.



You will need to live in the East of England.



You will need to be part of the research group for 2 years.



We welcome people from any background to join the group.

What you will do

You will:



- Tell the project team about your experiences of using social care and/or finding information about it.



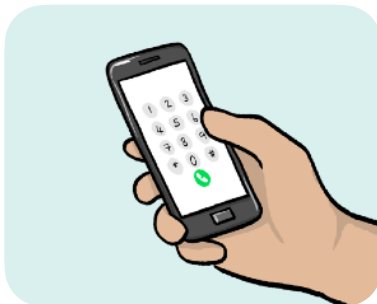
- Help the project team to find out information in an **accessible** way.
Accessible means it is easy to use and suitable for people with different needs.



- Tell us what you think about how we are finding out the information and what we write.



- Sometimes go to other meetings to share the ideas of the research group.



If you have any questions you can get in touch with Becki Meakin by:

- Phone: 07956 424 511

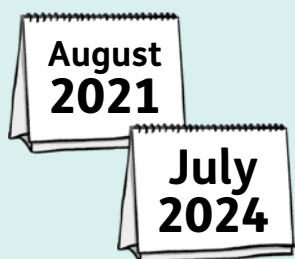


- Email: becki@shapingourlives.org.uk

About the project



Our project is about how people, social care staff and university staff can find new information to make services better.



The project will run from August 2021 to July 2024 (3 years).



We want to find out if there are better ways to find out information.



We want to check how well our research groups work.

What do we know about research in social care?



Over 1 million adults in the UK get support from social care services.



Social care helps people to look after themselves and live a good life.



The Government wants people who work in social care to find out more about it.



There aren't enough people who work in social care who know how to find out information.

What do we want to find out?



We want to give people who work in social care more skills so they can find out information.



We are going to try making small groups of staff who are interested in similar things.

Small groups have been used before to help staff get more skills.



We want to see if this works in social care.

What will we do?



We are going to work with Adult Social Care at Hertfordshire Council and Norfolk Council.



Together, we will create 4 groups of staff that will work on getting better skills for information finding.

Each group will be 5-6 people.

They will include staff with different levels of experience.



Each team will be led by someone who works in social care.



People who use social care and carers will be included in the work each group does.



The staff involved will get training and support to help them.

How will we check how well the groups are working?

We will collect information to see if the groups:



- Are a good way of getting people who do different jobs to work together.



- Help social care staff to understand how to find out facts and information.



- Find out information that helps local organisations, people who use social care and carers.



We will collect this information at the start, middle and end of the project.

What are the skills and experience of our team?

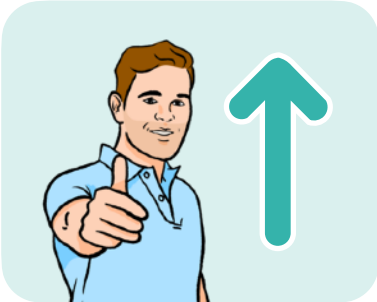


Our project team includes research people, staff in social care and experts with experience.



We have a lot of experience of:

- Working in social care.
- Finding out information about people who use social care.
- Improving the skills of people who work in social care.



Our project will have a group that gives us advice.



This group includes people who:

- Use social care services.



- Are carers.



- Work in social care.



- Are experts in using small groups of staff to build their skills.

Organisations that support our project

The logo for the University of Hertfordshire, featuring the text "University of Hertfordshire" in a sans-serif font and the letters "UH" in a large, bold, sans-serif font to the right.

University of Hertfordshire **UH**

- University of Hertfordshire

The logo for the University of East Anglia, featuring the letters "UEA" in a large, bold, serif font with a small pink star between the 'E' and 'A', and the text "University of East Anglia" in a smaller sans-serif font below.

UEA
University of East Anglia

- University of East Anglia

The logo for Kings College London, featuring the text "KING'S" in a large, bold, red serif font, "College" in a smaller, red script font, and "LONDON" in a red serif font below.

KING'S
College
LONDON

- Kings College London

The logo for Hertfordshire Council, featuring a green silhouette of a stag standing on a horizontal line, with the word "Hertfordshire" in a green sans-serif font below.

Hertfordshire

- Hertfordshire Council Council

The logo for Norfolk County Council, featuring a small crest on the left and the text "Norfolk" in a bold green sans-serif font, with "County Council" in a smaller green sans-serif font below.

Norfolk
County Council

- Norfolk County Council

The NIHR logo consists of the letters "NIHR" in a bold, dark blue, sans-serif font.

Applied Research Collaboration
East of England

- East of England Applied Research Collaboration



Shaping Our Lives
Inclusive Involvement Matters

- Shaping Our Lives

For more information



If you need more information please contact Professor Kathryn Almack by email:

k.almack@herts.ac.uk